



Woburn Place, London, WC1H

BUTLER & STAG



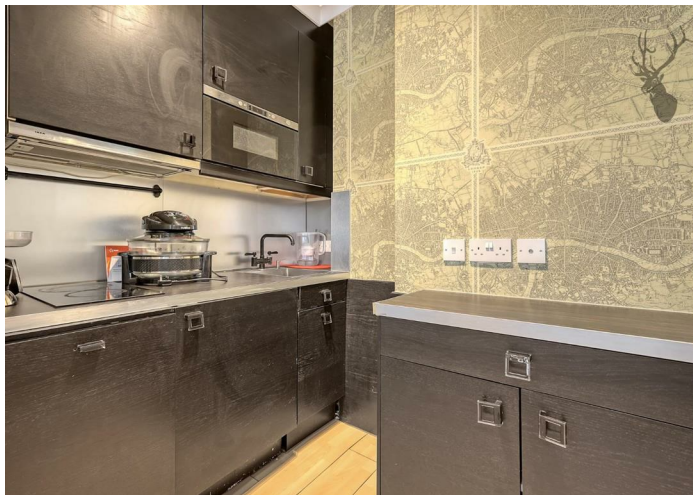
A well presented studio apartment set on the first floor of this popular 1930's mansion block. Just moments from Russell Square tube station and walking distance to Covent Garden. Fully Furnished



- First Floor
- Fully Modernised
- 24-Hour Concierge
- Furnished
- Close To Transport & Amenities
- Available NOW

A well presented studio apartment located on the first floor of this popular 1930's mansion block. Accommodation comprises of entrance hallway with cupboards, stylish shower room and studio room comprising of a James Bond pull down bed and features an open plan kitchen. Boasting 24-hour concierge, passenger lift and a secure entrance.

Conveniently located just moments from Russell Square tube station with Covent Garden, the West End, Brunswick Centre and the Eurostar terminal at St Pancras all within walking distance. Available NOW





Russel Court

Approx. Gross Internal Area 24.5 Sq M (263.8 Sq Ft)

BUTLER & STAG



Floor plan is for illustrative purposes only and is not to scale. Every attempt has been made to ensure the accuracy of the floor plan shown, however all measurements, fixtures, fittings and data shown are an approximate interpretation for illustrative purposes only.

IMPORTANT NOTICE - These particulars have been prepared in good faith and they are not intended to constitute part of an offer or contract. We have not performed a structural survey on this property and the services, appliances and specific fittings have not been tested. All photographs, measurements, floor plans and distances referred to are given as a guide and should not be relied upon.

BUTLER & STAG

☎ 020 8102 1236

🏠 508 Roman Road, Bow, London, E3 5LU

✉ bow@butlerandstag.com

www.butlerandstag.uk